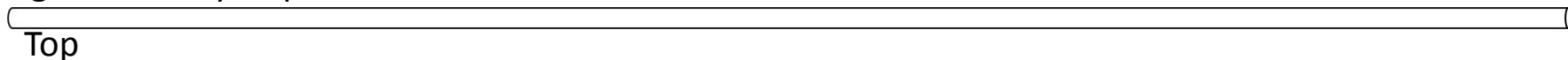
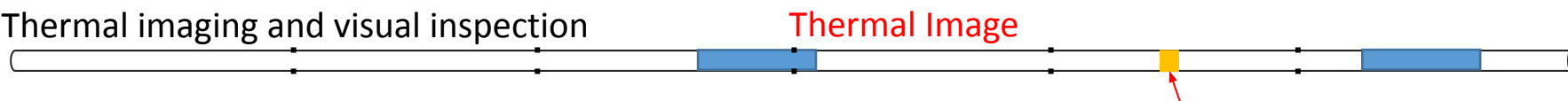


(A) Core WR313-H003-##H

(1) Rig floor safety inspection



(2) Thermal imaging and visual inspection

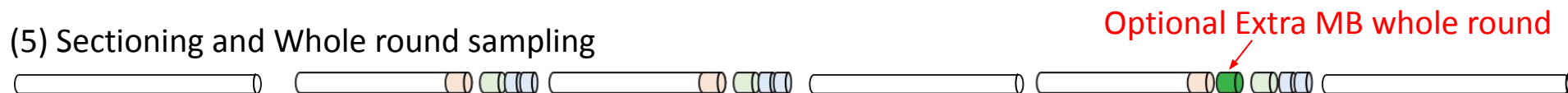


(3) Void Gas collection

(4) Section marks adjusted – WR samples identified

A horizontal line representing the core sample, divided into six sections labeled "Section 1", "2", "3", "4", "5", and "6" in blue text. A red arrow points to a blue rectangular block in Section 3, labeled "Baseline whole round set" in red text. Another red arrow points to a green rectangular block in Section 5, labeled "Optional IR anomaly whole round set" in red text. A third red arrow points to a red rectangular block at the right end of the core, labeled "Core Catcher Sample (PAL)" in red text. The label "CC" is written in blue text at the right end of the core.

(5) Sectioning and Whole round sampling



(6) Sediment strength measurement



(7) Headspace gas and cell count sampling



(8) Repeat Thermal imaging of remaining core

(9) Core Storage

(B) Core Section H003-XXH-02

